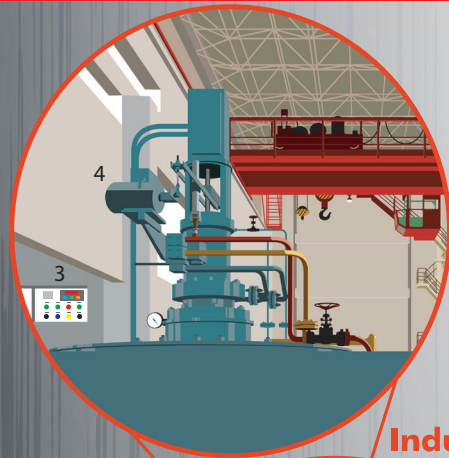
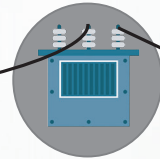


ENERGY PRODUCT SCOPE - CANADA

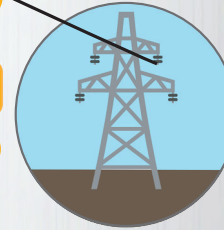


1. ASC & ACSR / Bare Al & Al Alloy



Utility

2. ACSR

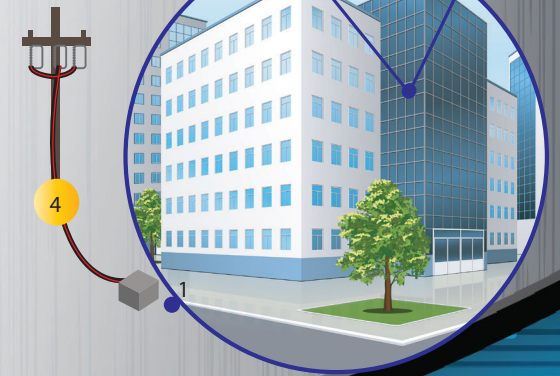
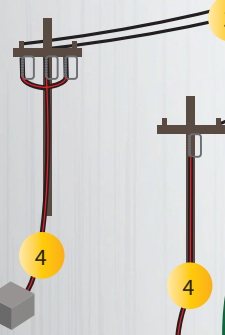


Industrial

3. Covered Overhead Distribution Line Wire
ASCR
4. Direct Burial/In conduit:
ENERGEX[®] CN & SP

Residential

Commercial



1. Service Entrance:

Overhead: NS75 & NS90

In Conduit: INSTAGLIDE[®] RW90/RWU90

Direct Burial: INSTAGLIDE[®] RWU90

ACWU90

CORFLEX[®] RA90

FIREX[®] II - T ECK 90

Medium Voltage Armoured Power Cables

2. Wind: ENERGEX[®] CN & SP Medium Voltage

3. Power & Control: ACWU90

TEW

Bare Copper

INSTAGLIDE[®] T90/TWN75 & RW90/RWU90

CORFLEX[®] RA90

FIREX[®] II - TECK 90

Medium Voltage Armoured Power Cables

4. VFD: DriveRx[®] VFD

1. Service Entrance:

Overhead: NS75 & NS90

Direct Burial: ACWU90

USEI75 & USEI90 & USEB90

2. Heating & A/C: AC90 Cu & Al

HEATEX[®] NMD90

3. Lights/Appliances: CANADEX[®] NMD90

4. Landscape: SUPERVEX[®] NMWU

1. Service Entrance:

Overhead: NS75 & NS90

In Conduit: INSTAGLIDE[®] RW90/RWU90

Direct Burial: INSTAGLIDE[®] RWU90

ACWU90

CORFLEX[®] RA90

FIREX[®] II - TECK90

2. Power & Control: TW75

INSTAGLIDE[®] T90/TWN75 & RW90/RWU90

3. HVAC: DriveRx[®] VFD

Bare Copper

4. Lights & Power: AC90 Cu & Al

TEXCAN
A Sonepar Company

Call Texcan at 1-800-665-1025
or email texcan.sales@texcan.com

www.nexans.ca

Nexans
BRINGS ENERGY TO LIFE